

## RONDO sealing collar



The **RONDO Sealing Collar** reliably seals ducts and pipes with smooth surfaces. The openings in concrete floor slabs, walls and shafts are securely sealed against groundwater and pressurised water.



RONDO sealing collars

### Technical specifications:

Article number:	090890 to 090954
Colour:	Green (DN 10 – DN 400) Black (DN 450 – DN 1200)
Material:	Green: TPE Black: EPDM
Density:	Green: approx. 1.17 kg/dm <sup>3</sup> Black: approx. 1.45 kg/dm <sup>3</sup>
Hardness:	Approx. 55 ± 5 Shore A
Tensile strength:	Approx. 6.5 N/mm <sup>2</sup>
Elongation at break:	Approx. 380%
Weight:	0.13 kg – 5.75 kg
Service temperature range:	Approx. -30°C up to +70°C

**MASTERTEC GmbH & Co. KG**

Gewerbegebiet Unterhaid · Im Maintal 13 · D-96173 Oberhaid · Tel.: +49 (0) 9503 5047-0 · Fax: +49 (0) 9503 5047-20 · info@mastertec.eu

Quellbänder · Fugenbleche · Injektionsschläuche · Schalöl · Harze · Mauerkragen · Rohrdurchführungen · Ringraumdichtungen · Blitzschutz · Trittschall · Mauersperrbahnen · Streckmetall

[www.MASTERTEC.eu](http://www.MASTERTEC.eu)

Test certificate / approvals:

Test report  
MFPA Leipzig  
No.: PB 5.1 / 13-164

Slurry/liquid manure/silage effluent test  
(RO 10 – RO 400)  
MPA Braunschweig  
(1200/442/15e) – Pan of 28.10.2015

Alkali resistance (RO 10 – RO 400)  
MPA Braunschweig  
(1200/642/15b) – Pan of 26.01.2016

Pressure water-tightness:

5 bar (green)  
4 bar (black)

Resistances:

e.g.  
Diluted acids (green/black)  
Diluted alkalis (green/black)  
Liquid manure/slurry (green/black)  
Fermentation mash (green/black)  
Oil and bitumen (green)  
Radon (green)  
Methane gas (green)  
Ozone (green)  
Liquids aggressive to concrete (green)

Further resistances are available on request

Packing unit:

Available singly

Additional packing units:

RO 110 50 pcs./carton  
RO 125 40 pcs./carton  
RO 160 35 pcs./carton  
RO 200 30 pcs./carton

Storage:

Store in a dry place and out of direct sunlight

Disposal:

Can be disposed of at municipal waste landfill sites, taking into account the local waste disposal regulations.

**MASTERTEC GmbH & Co. KG**

Gewerbegebiet Unterhaid · Im Maintal 13 · D-96173 Oberhaid · Tel.: +49 (0) 9503 5047-0 · Fax: +49 (0) 9503 5047-20 · info@mastertec.eu

Quellbänder · Fugenbleche · Injektionsschläuche · Schalöl · Harze · Mauerkragen · Rohrdurchführungen · Ringraumdichtungen · Blitzschutz · Trittschall · Mauersperrbahnen · Streckmetall

[www.MASTERTEC.eu](http://www.MASTERTEC.eu)

## Sizes:

Art.-Nr.:	Type	for pipe outer diameters / mm	Suitable for outer dia.		Pcs. per pack	Weight per pc.	
			from mm	to mm			
0090890	RO 10	for lightning protection round conductors	8	10	1	0,13 kg	
0090892	RO Flach	for earthing strap	30 x 3,5 mm u. 30 x 3 mm		1	0,15 kg	
0090900	RO 25	25	25	25	1	0,25 kg	
0090902	RO 32	32	31	32	1	0,25 kg	
0090904	RO 40	40	39	42	1	0,26 kg	
0090906	RO 50	50	48	53	1	0,29 kg	
0090908	RO 63	63	61	64	1	0,32 kg	
0090910	RO 75	75	72	80	1	0,36 kg	
0090912	RO 90	90	87	92	1	0,45 kg	
0090914	RO 110	Sewage pipe DN 100	110	107	115	50 pcs. / carton	0,48 kg
0090916	RO 125	Sewage pipe DN 125	125	123	130	40 pcs. / carton	0,51 kg
0090918	RO 140		140	137	147	1	0,54 kg
0090920	RO 160	Sewage pipe DN 150	160	157	166	35 pcs. / carton	0,62 kg
0090921	RO 170		170	167	177	1	0,66 kg
0090922	RO 180		180	177	187	1	0,68 kg
0090924	RO 200	Sewage pipe DN 200	200	197	207	30 pcs. / carton	0,70 kg
0090926	RO 225		225	220	230	1	0,81 kg
0090928	RO 250	Sewage pipe DN 250	250	245	260	1	0,89 kg
0090930	RO 280		280	275	290	1	0,92 kg
0090932	RO 315	Sewage pipe DN 300	315	310	324	1	1,07 kg
0090934	RO 355		355	350	365	1	1,18 kg
0090936	RO 400	Sewage pipe DN 400	400	395	410	1	1,31 kg
0090938	RO 450		450	440	460	1	1,90 kg
0090940	RO 500	Sewage pipe DN 500	500	495	515	1	2,15 kg
0090942	RO 560		560	555	580	1	2,60 kg
0090944	RO 630		630	625	650	1	2,90 kg
0090946	RO 710		710	705	735	1	3,00 kg
0090948	RO 800		800	795	830	1	3,40 kg
0090950	RO 900		900	895	930	1	4,25 kg
0090952	RO 1000		1000	995	1030	1	4,45 kg
0090954	RO 1200		1200	1195	1240	1	5,75 kg

We can produce any diameter between 440 mm and 1200 mm



RO 10 – RO 400 (TPE)



≥ RO 450 (EPDM)

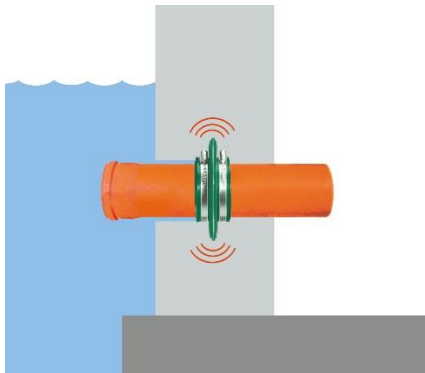
**MASTERTEC GmbH & Co. KG**

Gewerbegebiet Unterhaid · Im Maintal 13 · D-96173 Oberhaid · Tel.: +49 (0) 9503 5047-0 · Fax: +49 (0) 9503 5047-20 · info@mastertec.eu

Quellbänder · Fugenbleche · Injektionsschläuche · Schalöl · Harze · Mauerkragen · Rohrdurchführungen · Ringraumdichtungen · Blitzschutz · Trittschall · Mauersperrbahnen · Streckmetall

[www.MASTERTEC.eu](http://www.MASTERTEC.eu)

## Application:



The **RONDO sealing collar** is suitable for routing pipes through concrete slabs, walls and shafts so that they are pressure water-tight.

It prevents moisture from penetrating the structure along the pipe's outer wall.

The **RONDO sealing collar** can be installed on all smooth-walled pipes.

## Installation:

Also see our installation video at [www.mastertec.eu](http://www.mastertec.eu)

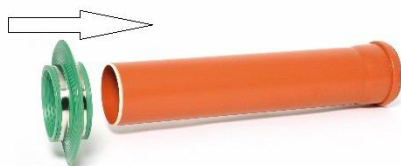
YouTube

Installation-  
video



The **RONDO sealing collar** is supplied ready-to-install with two (green) or three (black) stainless-steel clamping straps for fixing.

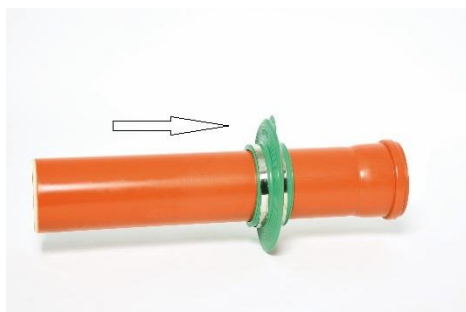
Soiled pipes must be cleaned prior to installation.



Soiled pipe walls must be cleaned prior to attaching the **RONDO sealing collar**.

The **RONDO sealing collar** is even easier to install if placed in hot water beforehand (10 minutes).

Push the **RONDO sealing collar** onto the end of the pipe and slide along before the pipe is installed.



The **RONDO sealing collar** should be mounted centrally on the wall/floor plate.

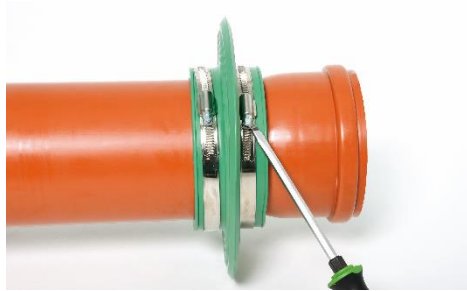
Always ensure a minimum concrete covering of 5 cm. The distance to the surrounding reinforcement or other components must be at least 3 cm.

MASTERTEC GmbH & Co. KG

Gewerbegebiet Unterhaid · Im Maintal 13 · D-96173 Oberhaid · Tel.: +49 (0) 9503 5047-0 · Fax: +49 (0) 9503 5047-20 · [info@mastertec.eu](mailto:info@mastertec.eu)

Quellbänder · Fugenbleche · Injektionsschläuche · Schalöl · Harze · Mauerkragen · Rohrdurchführungen · Ringraumdichtungen · Blitzschutz · Trittschall · Mauersperrbahnen · Streckmetall

[www.MASTERTEC.eu](http://www.MASTERTEC.eu)



Use a screwdriver to tighten the clamping straps sufficiently to prevent the **RONDO sealing collar** from shifting during concreting.

During concreting, ensure thorough sealing around the **RONDO sealing collar** in order to prevent defects/rock pockets.

## Safety:

The **RONDO sealing collar** does not contain any hazardous substances and poses no problems whatsoever in terms of handling and application. To the best of our knowledge, it contains no substances that are harmful to groundwater or could trigger health problems or allergic reactions in the installer.

Nonetheless, we recommend that an appropriate level of hygiene is observed during application and that hands are washed as a basic rule before meals.

## Basic principles:

All dimensions and information in this data sheet reflect the results of the laboratory tests that have been carried out.

Deviations from the values determined by us under laboratory conditions are possible due to environmental and operating conditions beyond our control.

The data in this data sheet only applies for the product delivered by us.

The product data corresponds only to the specifications in Germany. Possible country-specific deviations are not taken into account here.

## Disclaimer:

The technical information reflects our current knowledge of the RONDO sealing collar. It is intended only as information for users. As we do not know the envisaged applications and installation conditions, it is the responsibility of the user to carefully check that the product is fit for purpose. Due to the different components at the installation site and the in-situ working conditions, MASTERTEC cannot provide any guarantee whatsoever for the result of the work. Claims arising from any legal relationship can only be recognised in the event of wilful intent or gross negligence, irrespective of the statements made here or advice provided verbally. In this case the user must prove that he has provided MASTERTEC in writing with all the information required to correctly assess the installation situation in good time. Subject to necessary product specifications or further developments. By providing this information MASTERTEC does not intend to infringe third-party rights. The latest data sheet in each case applies. Our corresponding terms and conditions of sale and delivery apply.

Version dated 01-2017

**MASTERTEC GmbH & Co. KG**

Gewerbegebiet Unterhaid · Im Maintal 13 · D-96173 Oberhaid · Tel.: +49 (0) 9503 5047-0 · Fax: +49 (0) 9503 5047-20 · info@mastertec.eu

Quellbänder · Fugenbleche · Injektionsschläuche · Schalöl · Harze · Mauerkragen · Rohrdurchführungen · Ringraumdichtungen · Blitzschutz · Trittschall · Mauersperrbahnen · Streckmetall

[www.MASTERTEC.eu](http://www.MASTERTEC.eu)