

## KP-600 BALCONY CONNECTOR - 20 cm module

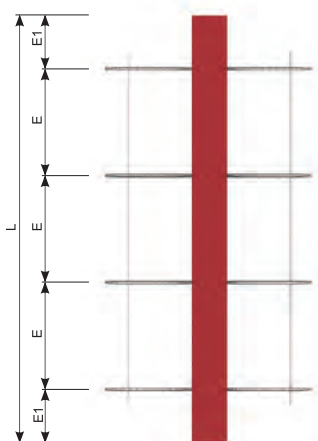
Concrete class:  $\geq$  C25/30

Symbol	h [mm]	Bar diameter $\Phi$ [mm]	Quantity	$V_{rd}(+)$ [kN]	Dimension [mm]				
			Rod		S	s11	$h_1$	E	E1
KP-601 L=200 mm	160	8	2	38	480	200	120	100	50
	180	8	2	38	480	200	120	100	50
	200	8	2	38	480	200	120	100	50
	220	10	2	61	720	320	160	100	50
	240	10	2	61	720	320	160	100	50
	260	10	2	61	720	320	160	100	50
	280	10	2	61	720	320	160	100	50
300	10	2	61	720	320	160	100	50	

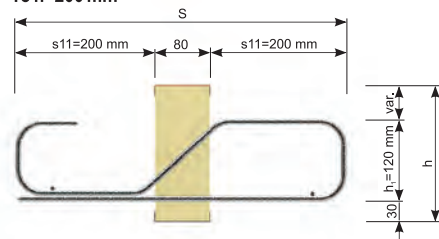
## KP-600 BALCONY CONNECTOR - element 100 cm

Concrete class:  $\geq$  C25/30

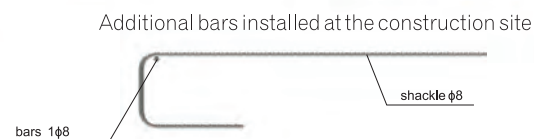
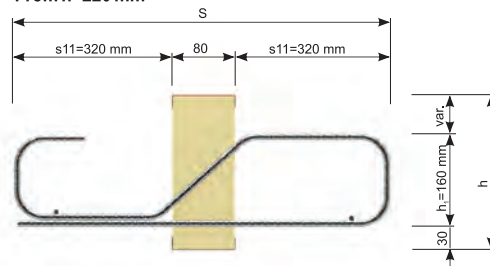
KP-602 L=1000 mm	160	8	2	38	480	200	120	400	300
	180	8	2	38	480	200	120	400	300
	200	8	2	38	480	200	120	400	300
	220	10	2	61	720	320	160	400	300
	240	10	2	61	720	320	160	400	300
	260	10	2	61	720	320	160	400	300
	280	10	2	61	720	320	160	400	300
300	10	2	61	720	320	160	400	300	
KP-603 L=1000 mm	160	8	3	57	480	200	120	333	167
	180	8	3	57	480	200	120	333	167
	200	8	3	57	480	200	120	333	167
	220	10	3	92	720	320	160	333	167
	240	10	3	92	720	320	160	333	167
	260	10	3	92	720	320	160	333	167
	280	10	3	92	720	320	160	333	167
300	10	3	92	720	320	160	333	167	
KP-604 L=1000 mm	160	8	4	76	480	200	120	250	125
	180	8	4	76	480	200	120	250	125
	200	8	4	76	480	200	120	250	125
	220	10	4	122	720	320	160	250	125
	240	10	4	122	720	320	160	250	125
	260	10	4	122	720	320	160	250	125
	280	10	4	122	720	320	160	250	125
300	10	4	122	720	320	160	250	125	
KP-605 L=1000 mm	160	8	5	95	480	200	120	200	100
	180	8	5	95	480	200	120	200	100
	200	8	5	95	480	200	120	200	100
	220	10	5	153	720	320	160	200	100
	240	10	5	153	720	320	160	200	100
	260	10	5	153	720	320	160	200	100
	280	10	5	153	720	320	160	200	100
300	10	5	153	720	320	160	200	100	
KP-606 L=1000 mm	160	8	6	113	480	200	120	167	83
	180	8	6	113	480	200	120	167	83
	200	8	6	113	480	200	120	167	83
	220	10	6	184	720	320	160	167	83
	240	10	6	184	720	320	160	167	83
	260	10	6	184	720	320	160	167	83
	280	10	6	184	720	320	160	167	83
300	10	6	184	720	320	160	167	83	



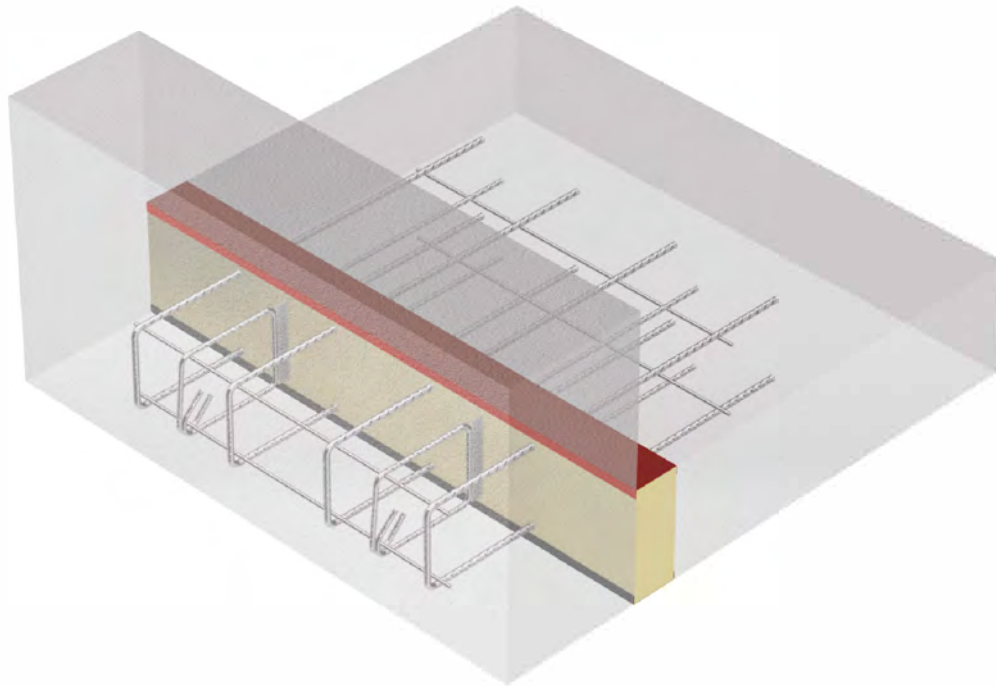
To h=200 mm



From h=220 mm



■ **KP-700 BALCONY CONNECTOR FOR THE INSTALLATION OF PARAPET WALLS, LEDGES AND SHORT SUPPORTS**

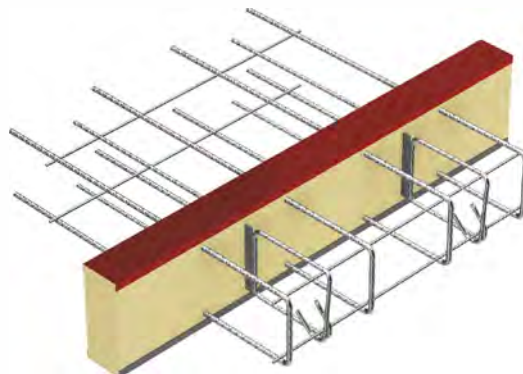


- standard elements for ceilings of thickness between 140 mm and 300 mm
- standard insulation thickness 80 mm; options: 60 mm, 100 mm, 120 mm
- insulation type: mineral wool (WM) or styrofoam (XPS)
- reinforcement bars (plate) of stainless steel

**Marking example:**

KP - 704 - 4 - x - 10 - 2, h=200 mm, XPS80, L=1000 mm

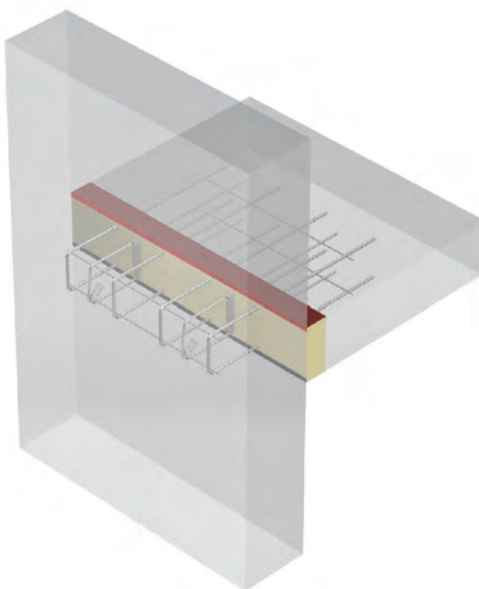
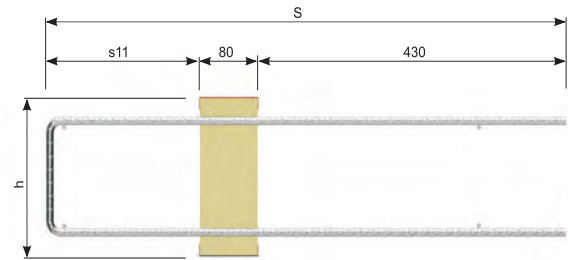
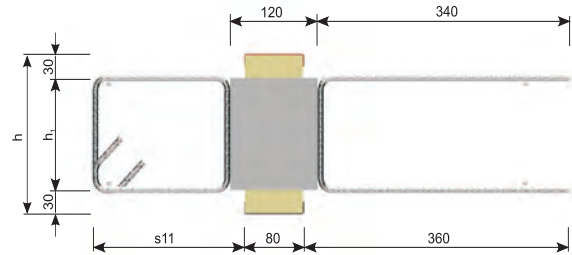
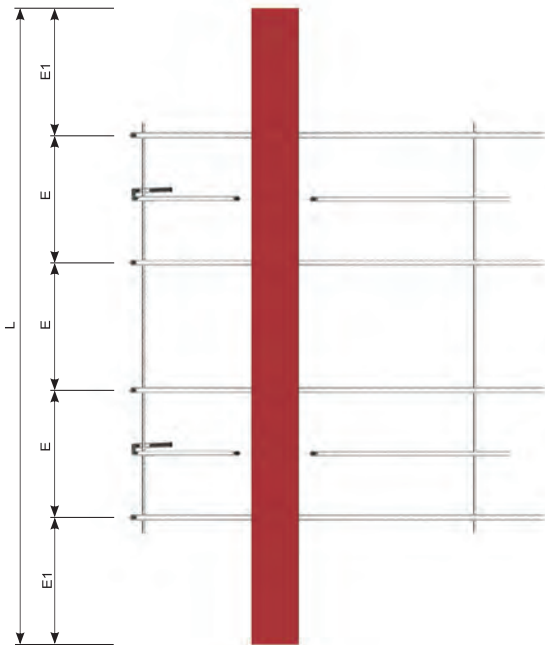
connector	quantity	x	bar	quantity
type	of bars		diameter	of steel
				plate



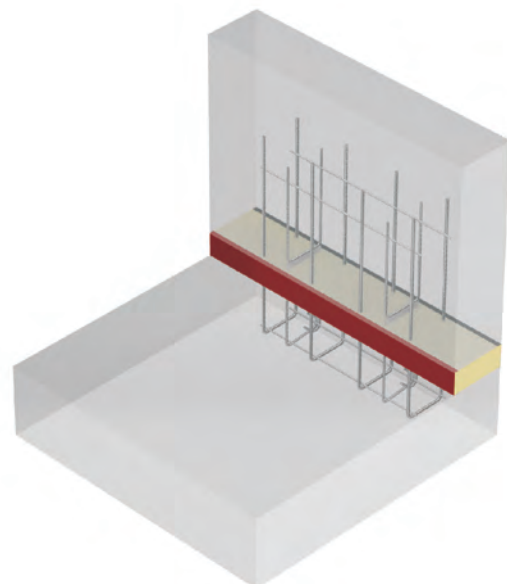
KP - 704 balcony connector (4x10-2)

KP-700 BALCONY CONNECTOR - 20 cm module										Concrete class: $\geq$ C25/30							
Symbol	h [mm]	Bar diameter $\phi$ [mm]	Quantity		s11=120 mm	s11=200 mm	Insulation 80 mm	Insulation 120 mm	$M_{Rd=0}$ $N_{Rd}$ [kN]	Dimension [mm]							
			Rod	Plate	$M_{Rd}(\pm)$ [kNm]	$M_{Rd}(\pm)$ [kNm]	$V_{Rd}(\pm)$ [kN]	$V_{Rd}(\pm)$ [kN]		s11			S			E	E1
KP-701 2x10-1 L=200 mm	140	10	2	1	4	5	22	16	124	120	160	200	630	670	710	100	50
	160	10	2	1	5	7	27	22	124	120	160	200	630	670	710	100	50
	180	10	2	1	6	8	33	27	124	120	160	200	630	670	710	100	50
	200	10	2	1	8	10	38	31	124	120	160	200	630	670	710	100	50
	220	10	2	1	9	11	44	35	124	120	160	200	630	670	710	100	50
	240	10	2	1	11	12	49	40	124	120	160	200	630	670	710	100	50
	260	10	2	1	12	14	55	45	124	120	160	200	630	670	710	100	50
	280	10	2	1	14	15	60	48	124	120	160	200	630	670	710	100	50
300	10	2	1	15	17	65	53	124	120	160	200	630	670	710	100	50	
KP-700 BALCONY CONNECTOR - element 100 cm										Concrete class: $\geq$ C25/30							
KP-702 2x10-1 L=1000 mm	140	10	2	1	4	5	22	16	124	120	160	200	630	670	710	400	300
	160	10	2	1	5	7	27	22	124	120	160	200	630	670	710	400	300
	180	10	2	1	6	8	33	27	124	120	160	200	630	670	710	400	300
	200	10	2	1	8	10	38	31	124	120	160	200	630	670	710	400	300
	220	10	2	1	9	11	44	35	124	120	160	200	630	670	710	400	300
	240	10	2	1	11	12	49	40	124	120	160	200	630	670	710	400	300
	260	10	2	1	12	14	55	45	124	120	160	200	630	670	710	400	300
	280	10	2	1	14	15	60	48	124	120	160	200	630	670	710	400	300
300	10	2	1	15	17	65	53	124	120	160	200	630	670	710	400	300	
KP-703 3x10-1 L=1000 mm	140	10	3	1	6	8	22	16	186	120	160	200	630	670	710	300	200
	160	10	3	1	8	10	27	22	186	120	160	200	630	670	710	300	200
	180	10	3	1	10	12	33	27	186	120	160	200	630	670	710	300	200
	200	10	3	1	12	15	38	31	186	120	160	200	630	670	710	300	200
	220	10	3	1	14	17	44	35	186	120	160	200	630	670	710	300	200
	240	10	3	1	16	19	49	40	186	120	160	200	630	670	710	300	200
	260	10	3	1	18	21	55	45	186	120	160	200	630	670	710	300	200
	280	10	3	1	21	23	60	48	186	120	160	200	630	670	710	300	200
300	10	3	1	23	26	65	53	186	120	160	200	630	670	710	300	200	
KP-704 4x10-2 L=1000 mm	140	10	4	2	8	10	43	32	248	120	160	200	630	670	710	200	200
	160	10	4	2	10	13	54	44	248	120	160	200	630	670	710	200	200
	180	10	4	2	13	16	65	54	248	120	160	200	630	670	710	200	200
	200	10	4	2	15	19	76	62	248	120	160	200	630	670	710	200	200
	220	10	4	2	18	22	87	70	248	120	160	200	630	670	710	200	200
	240	10	4	2	21	25	98	80	248	120	160	200	630	670	710	200	200
	260	10	4	2	24	28	109	90	248	120	160	200	630	670	710	200	200
	280	10	4	2	27	31	120	96	248	120	160	200	630	670	710	200	200
300	10	4	2	31	34	130	106	248	120	160	200	630	670	710	200	200	
KP-705 6x10-3 L=1000 mm	140	10	6	3	11	15	65	48	372	120	160	200	630	670	710	150	150
	160	10	6	3	15	20	81	66	372	120	160	200	630	670	710	150	150
	180	10	6	3	19	24	98	81	372	120	160	200	630	670	710	150	150
	200	10	6	3	23	29	114	93	372	120	160	200	630	670	710	150	150
	220	10	6	3	27	33	131	105	372	120	160	200	630	670	710	150	150
	240	10	6	3	32	37	147	120	372	120	160	200	630	670	710	150	150
	260	10	6	3	36	42	164	135	372	120	160	200	630	670	710	150	150
	280	10	6	3	41	46	180	144	372	120	160	200	630	670	710	150	150
300	10	6	3	46	51	195	159	372	120	160	200	630	670	710	150	150	

■ **KP-700 BALCONY CONNECTOR FOR THE INSTALLATION OF PARAPET WALLS, LEDGES AND SHORT SUPPORTS**

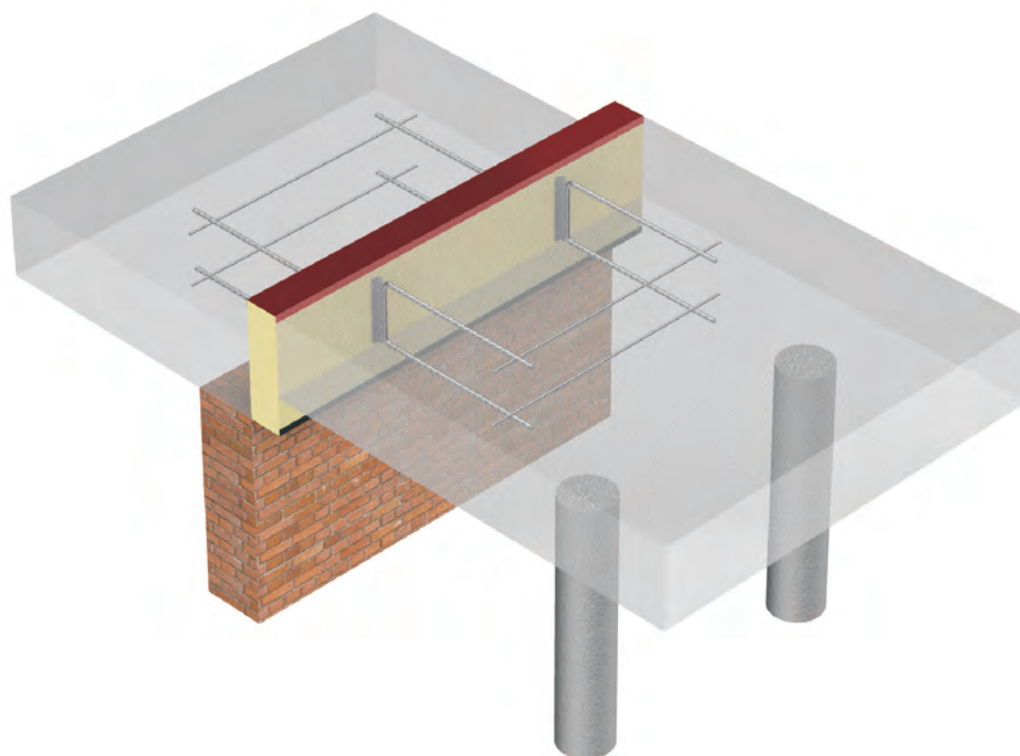


Connection of wall-support



Connection of Parapet wall-roof ceiling

■ **KP-800 BALCONY CONNECTOR FOR ARTICULATE-SUPPORTED BALCONY SLABS WITH SHIFTED BALCONY SLAB WITH RESPECT TO THE CEILING**

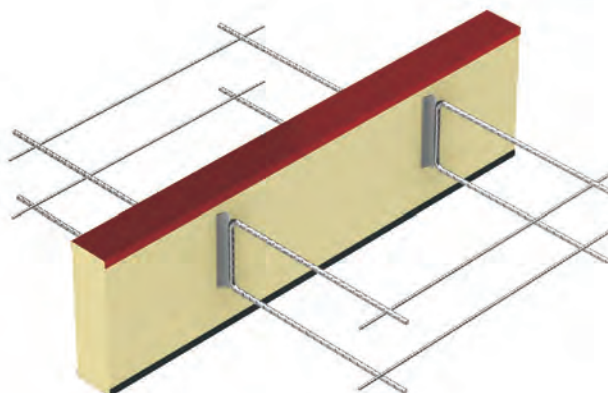


- standard elements for ceilings of thickness between 160 mm and 500 mm
- standard insulation thickness 80 mm; options: 60 mm
- insulation type: mineral wool (WM) or styrofoam (XPS)
- steel plates of stainless steel
- reinforcement bars (plate) of stainless steel

**Marking example:**

KP - 802/150, 2 DH60, XPS80, L=1000 mm

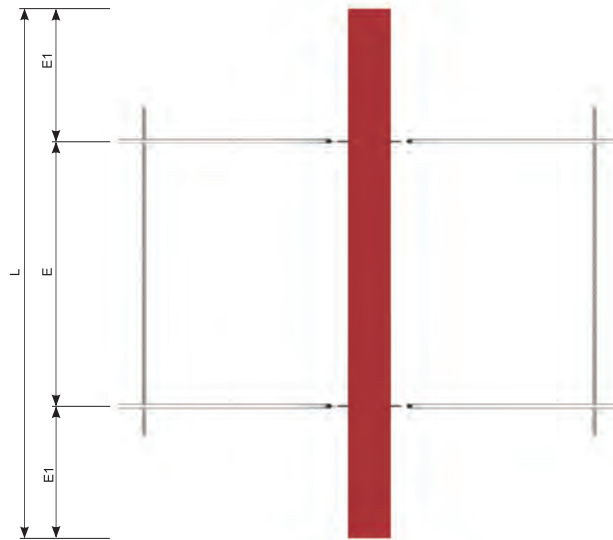
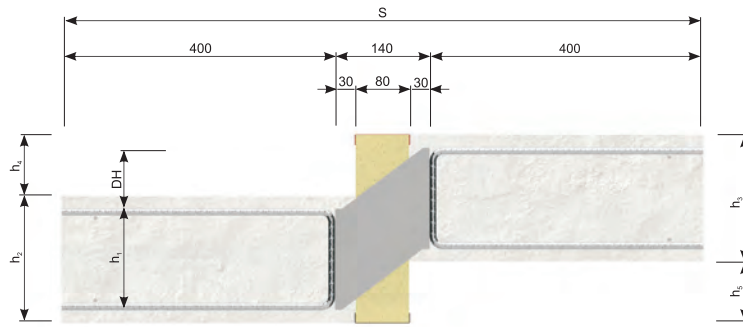
connector type      quantity of steel plate



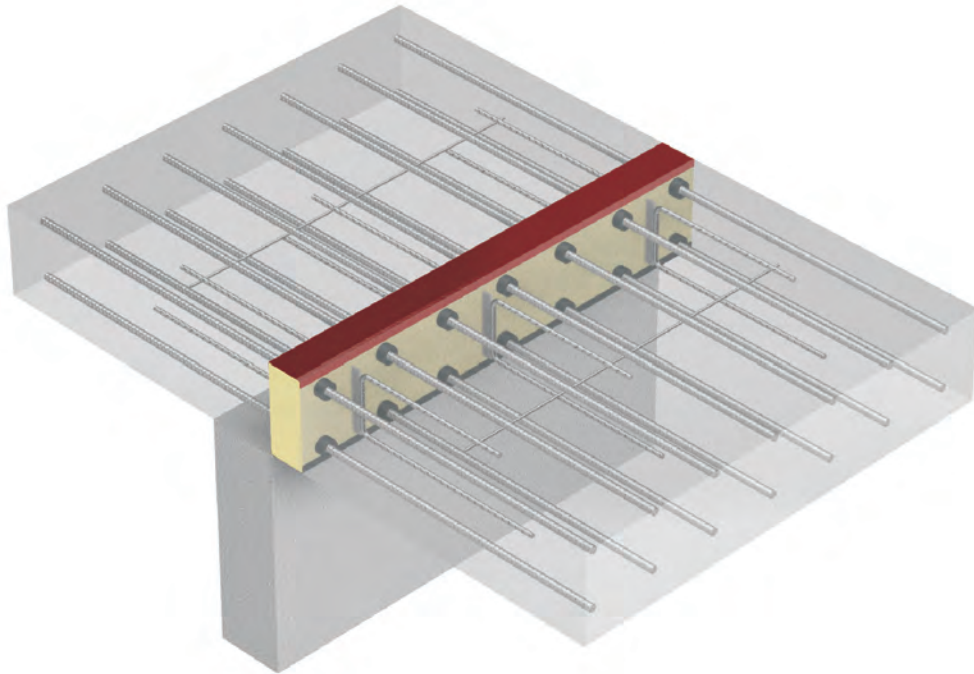
KP-802/150 balcony connector (2 pl) DH60

KP-800 BALCONY CONNECTOR - element 100 cm					Concrete class: $\geq$ C25/30		
Symbol	Quantity	h, [mm]	Shift DH [mm]	V <sub>rd</sub> (±) [kN]	Dimension [mm]		
	Plate				S	E	E1
KP-801/110 L=1000 mm	1	110	60	26	940	-	500
	1	110	90	24	940	-	500
	1	110	120	22	940	-	500
KP-801/130 L=1000 mm	1	130	60	32	940	-	500
	1	130	90	30	940	-	500
	1	130	120	27	940	-	500
KP-801/150 L=1000 mm	1	150	60	38	940	-	500
	1	150	90	36	940	-	500
	1	150	120	32	940	-	500
KP-802/110 L=1000 mm	2	110	60	52	940	500	250
	2	110	90	48	940	500	250
	2	110	120	44	940	500	250
KP-802/2-130 L=1000 mm	2	130	60	64	940	500	250
	2	130	90	59	940	500	250
	2	130	120	54	940	500	250
KP-802/150 L=1000 mm	2	150	60	76	940	500	250
	2	150	90	72	940	500	250
	2	150	120	64	940	500	250
KP-803/110 L=1000 mm	3	110	60	78	940	333	167
	3	110	90	72	940	333	167
	3	110	120	66	940	333	167
KP-803/130 L=1000 mm	3	130	60	96	940	333	167
	3	130	90	88	940	333	167
	3	130	120	81	940	333	167
KP-803/150 L=1000 mm	3	150	60	114	940	333	167
	3	150	90	108	940	333	167
	3	150	120	96	940	333	167
KP-804/110 L=1000 mm	4	110	60	104	940	250	125
	4	110	90	96	940	250	125
	4	110	120	88	940	250	125
KP-804/130 L=1000 mm	4	130	60	128	940	250	125
	4	130	90	118	940	250	125
	4	130	120	108	940	250	125
KP-804/150 L=1000 mm	4	150	60	152	940	250	125
	4	150	90	144	940	250	125
	4	150	120	128	940	250	125
KP-805/110 L=1000 mm	5	110	60	130	940	200	100
	5	110	90	120	940	200	100
	5	110	120	110	940	200	100
KP-805/130 L=1000 mm	5	130	60	160	940	200	100
	5	130	90	148	940	200	100
	5	130	120	135	940	200	100
KP-805/150 L=1000 mm	5	150	60	190	940	200	100
	5	150	90	180	940	200	100
	5	150	120	160	940	200	100
KP-806/110 L=1000 mm	6	110	60	156	940	167	82
	6	110	90	144	940	167	82
	6	110	120	132	940	167	82
KP-806/130 L=1000 mm	6	130	60	192	940	167	82
	6	130	90	180	940	167	82
	6	130	120	162	940	167	82
KP-806/150 L=1000 mm	6	150	60	228	940	167	82
	6	150	90	216	940	167	82
	6	150	120	192	940	167	82

■ **KP-800 BALCONY CONNECTOR FOR ARTICULATE-SUPPORTED BALCONY SLABS WITH SHIFTED BALCONY SLAB WITH RESPECT TO THE CEILING**



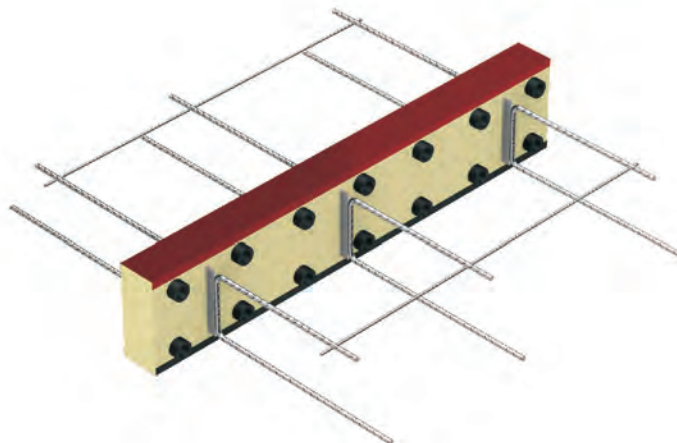
## ■ KP-900 BALCONY CONNECTOR FOR SUPPORT BALCONY SLABS



- standard elements for ceilings of thickness between 160 mm and 300 mm
- standard insulation thickness 80 mm; options: 60 mm
- insulation type: mineral wool (WM) or styrofoam (XPS)
- steel plates of stainless steel
- PVC pipe (inner diameter 24 mm, outer diameter 36 mm)

### Marking example:

KP-903, 3, h=200 mm, XPS80, L=1000 mm  
connector type      quantity of steel plate

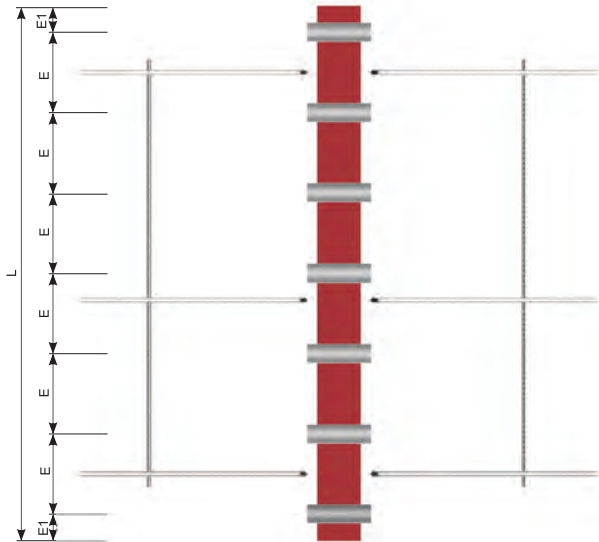


KP-903 balcony connector (3 pl)

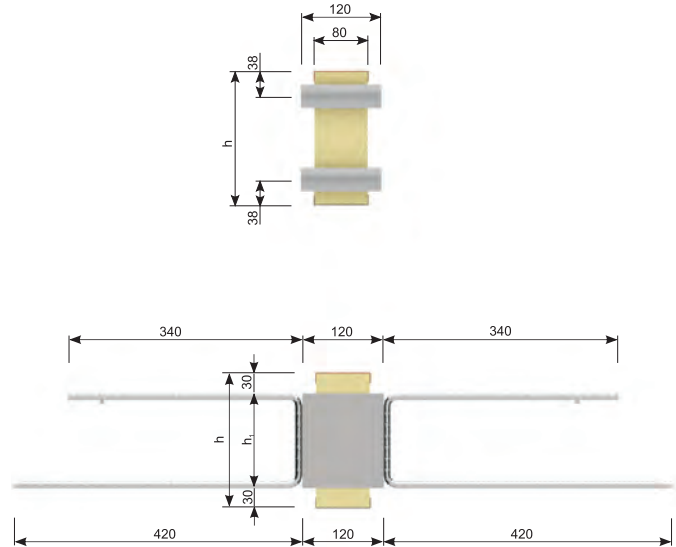


KP-900 BALCONY CONNECTOR - element 100 cm										Concrete class: $\geq$ C25/30		
Symbol	Ilość	h [mm]	h <sub>i</sub> [mm]	V <sub>rd</sub> (±) [kN]	Pręty dostarczane we własnym zakresie M <sub>Rd</sub> (2x7 prętów) [kNm]				Wymiar [mm]			
	Płytki				10	12	14	16	S	E	E1	
KP-901 L=1000 mm	1	160	100	27	20	28	37	47	960	150	50	
	1	180	120	32	24	34	46	59	960	150	50	
	1	200	140	38	29	41	55	71	960	150	50	
	1	220	160	44	34	48	65	83	960	150	50	
	1	240	180	49	39	55	74	96	960	150	50	
	1	260	200	55	44	62	83	106	960	150	50	
	1	280	220	60	48	69	93	120	960	150	50	
	1	300	240	65	53	76	102	132	960	150	50	
KP-902 L=1000 mm	2	160	100	54	20	28	37	47	960	150	50	
	2	180	120	65	24	34	46	59	960	150	50	
	2	200	140	76	29	41	55	71	960	150	50	
	2	220	160	87	34	48	65	83	960	150	50	
	2	240	180	98	39	55	74	96	960	150	50	
	2	260	200	109	44	62	83	106	960	150	50	
	2	280	220	120	48	69	93	120	960	150	50	
KP-903 L=1000 mm	3	160	100	81	20	28	37	47	960	150	50	
	3	180	120	98	24	34	46	59	960	150	50	
	3	200	140	114	29	41	55	71	960	150	50	
	3	220	160	131	34	48	65	83	960	150	50	
	3	240	180	147	39	55	74	96	960	150	50	
	3	260	200	164	44	62	83	106	960	150	50	
	3	280	220	180	48	69	93	120	960	150	50	
	3	300	240	195	53	76	102	132	960	150	50	
KP-904 L=1000 mm	4	160	100	108	20	28	37	47	960	150	50	
	4	180	120	130	24	34	46	59	960	150	50	
	4	200	140	152	29	41	55	71	960	150	50	
	4	220	160	174	34	48	65	83	960	150	50	
	4	240	180	196	39	55	74	96	960	150	50	
	4	260	200	218	44	62	83	106	960	150	50	
	4	280	220	240	48	69	93	120	960	150	50	
	4	300	240	260	53	76	102	132	960	150	50	
KP-905 L=1000 mm	5	160	100	122	20	28	37	47	960	150	50	
	5	180	120	146	24	34	46	59	960	150	50	
	5	200	140	171	29	41	55	71	960	150	50	
	5	220	160	196	34	48	65	83	960	150	50	
	5	240	180	221	39	55	74	96	960	150	50	
	5	260	200	245	44	62	83	106	960	150	50	
	5	280	220	270	48	69	93	120	960	150	50	
	5	300	240	293	53	76	102	132	960	150	50	
KPE-900 BALCONY CONNECTOR - element 100 cm										Concrete class: $\geq$ C25/30		
KPE-906 L=1000 mm	2	160	80	43	12	17	22	27	960	150	50	
	2	180	100	54	17	23	31	39	960	150	50	
	2	200	120	65	22	30	40	51	960	150	50	
	2	220	140	76	26	37	50	64	960	150	50	
	2	240	160	87	31	44	59	76	960	150	50	
	2	260	180	98	36	51	68	88	960	150	50	
	2	280	200	109	41	58	78	100	960	150	50	
	2	300	220	120	45	65	87	113	960	150	50	
KPE-907 L=1000 mm	2	160	80	86	12	17	22	27	960	150	50	
	2	180	100	108	17	23	31	39	960	150	50	
	2	200	120	130	22	30	40	51	960	150	50	
	2	220	140	152	26	37	50	64	960	150	50	
	2	240	160	174	31	44	59	76	960	150	50	
	2	260	180	196	36	51	68	88	960	150	50	
	2	280	200	218	41	58	78	100	960	150	50	
	2	300	220	240	45	65	87	113	960	150	50	

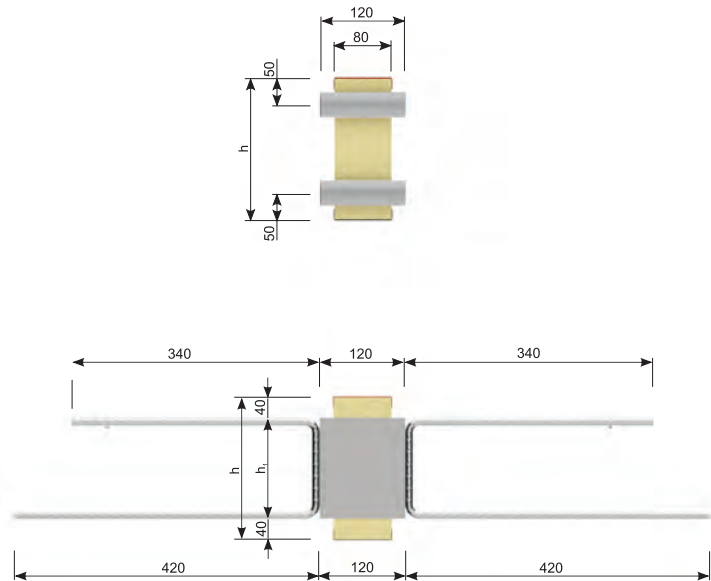
■ **KP-900 BALCONY CONNECTOR FOR SUPPORT BALCONY SLABS**



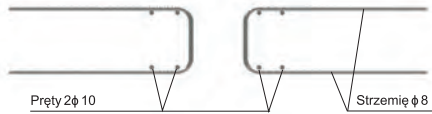
Elements KP-901 - KP-905



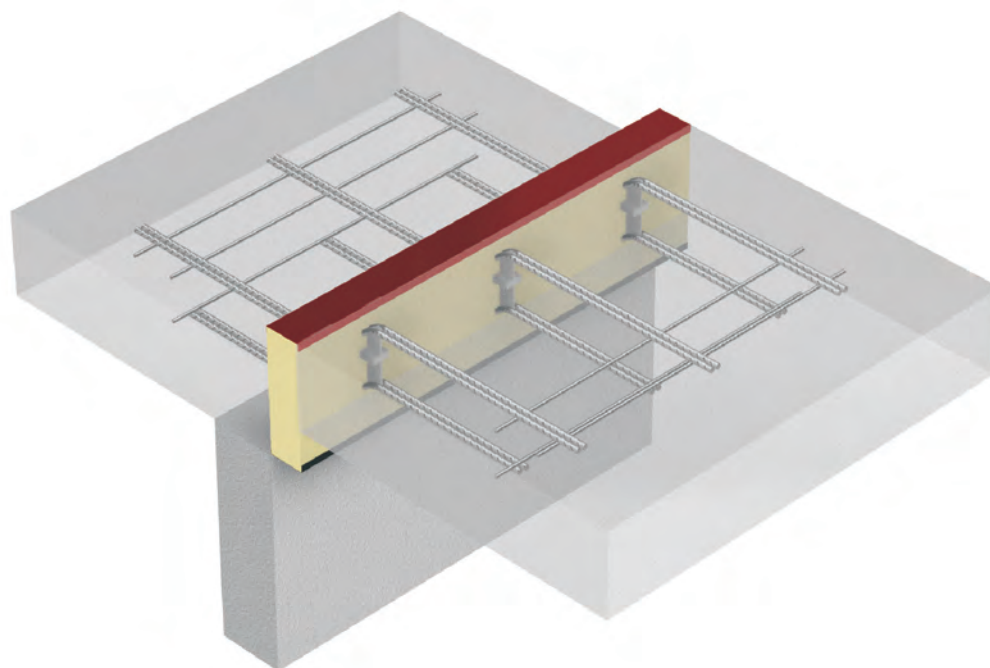
Corner elements KPE-906 - KPE-907



Additional bars installed at the construction site



■ **KP-1000 BALCONY CONNECTOR FOR SUPPORT BALCONY SLABS WITH SHIFTED BALCONY SLAB WITH RESPECT TO THE CEILING**

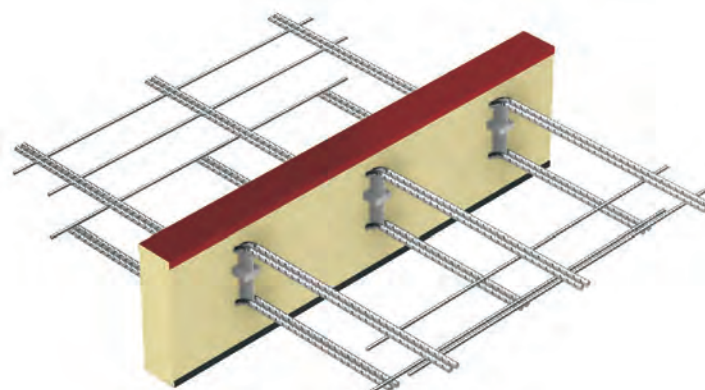


- standard elements for ceilings of thickness between 160 mm and 500 mm
- standard insulation thickness 80 mm; options: 60 mm
- insulation type: mineral wool (WM) or styrofoam (XPS)
- steel plates of stainless steel
- bars  $\phi 12$  mm of stainless steel

**Marking example:**

KP - 1003/110     3     DH60, XPS80, L=1000 mm

connector type     quantity of steel plate



KP - 1003/110 balcony connector (3pl) DH60

KP-1000 BALCONY CONNECTOR - 20 cm module						Concrete class: $\geq$ C25/30		
Symbol	Quantity	$h_1$ [mm]	Shift DH [mm]	$M_{rd} (\pm)$ [kNm]	$V_{rd} (\pm)$ [kN]	Dimension [mm]		
	Plate					S	E	E1
KP-1001/110 L=200 mm	1	110	60	14	26	1140	-	-
	1	110	90	12,5	24	1140	-	-
	1	110	120	11	22	1140	-	-
KP-1001/130 L=200 mm	1	130	60	16	32	1140	-	-
	1	130	90	14	30	1140	-	-
	1	130	120	12	27	1140	-	-
KP-1001/150 L=200 mm	1	150	60	19	38	1140	-	-
	1	150	90	17	36	1140	-	-
	1	150	120	15	32	1140	-	-

